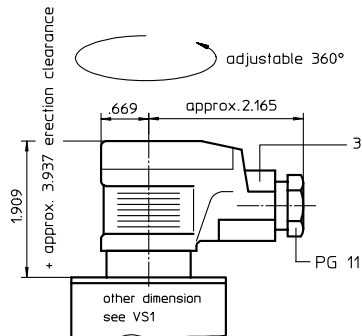


ELECTRONICAL CLOGGING SENSOR

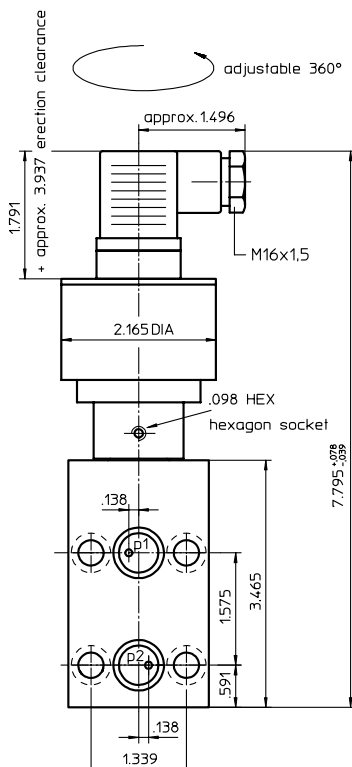
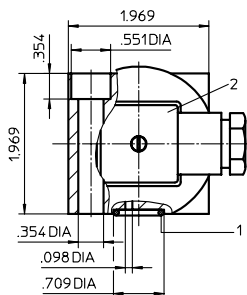
Series VS 2 (block execution)

Sheet No.
1608 C

Clogging sensor VS 2 ... SS1



Clogging sensor VS 2 ... GS



1. Type index: (ordering example)

VS 2. 1,5. P. -. GS. B. E

1	2	3	4	5	6	7
---	---	---	---	---	---	---

1 series:

VS2 = electrical clogging sensor with
2x PNP-switching contacts (75% and 100% of the Δp -nominal range)

2 indicator-pressure difference: (Δp -nominal)

1,5 = 22 PSI
2,5 = 36 PSI
5,0 = 73 PSI
6,0 = 87 PSI

3 sealing material:

P = Nitrile (NBR)
V = Viton (FPM)

4 material: (block)

- = standard
VA = stainless steel

5 connection:

GS = line adapter acc. to DIN 43650-designA/ISO4400,
three-channel plug

SS1 = line adapter acc. to DIN 43650-designA/ISO4400,
three-channel plug with LED switch-position indicator for VS 2

6 execution:

B = block execution

7 grounding:

E = 0 volt free of grounding
G = 0 volt grounded

2. Technical data:

max. operating pressure: 6000 PSI
max. pressure difference: 2320 PSI
distribution voltage: 24 V DC \pm 20%
residual ripple: < 10%
temperature range: + 14 °F to + 212°F (fluid)
+ 14 °F to + 176°F (electronics)
PNP-switching contacts: contact maker; I_{max} = 200 mA with 24V
protection: IP65 acc. to DIN EN 60529

3. Functions:

- Discrete control of the filter contamination by means of two PNP-switching contacts (75% and 100% of the Δp -nominal range)
- Indication of switching position by LED immediately at the sensor in connection with the signal plug SS1
- Cold start suppression up to approx. + 77°F
- Suppression of pressure peaks
- Interchangeable with clogging indicator type AE (INT)

4. Spare parts:

item	qty.	designation	dimension	article-no.	
1	2	O-ring	14x2	304342 (NBR)	304722 (FPM)
2	1	GS	DIN 43650-designA/ISO4400	312492	
3	1	SS1	DIN 43650-designA/ISO4400	310403	

EDV 06/09

Changes of measures and design are subject to alteration!

internormen
technology

900 Air Park Drive, Zanesville, Ohio 43701

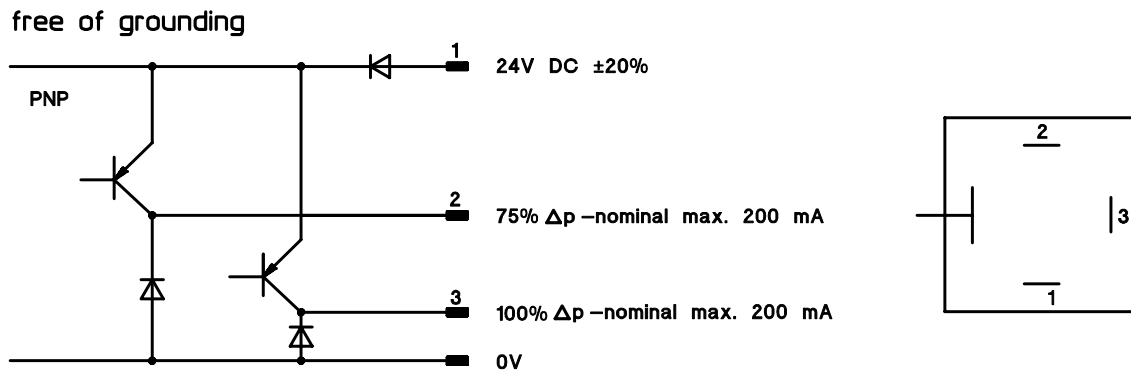
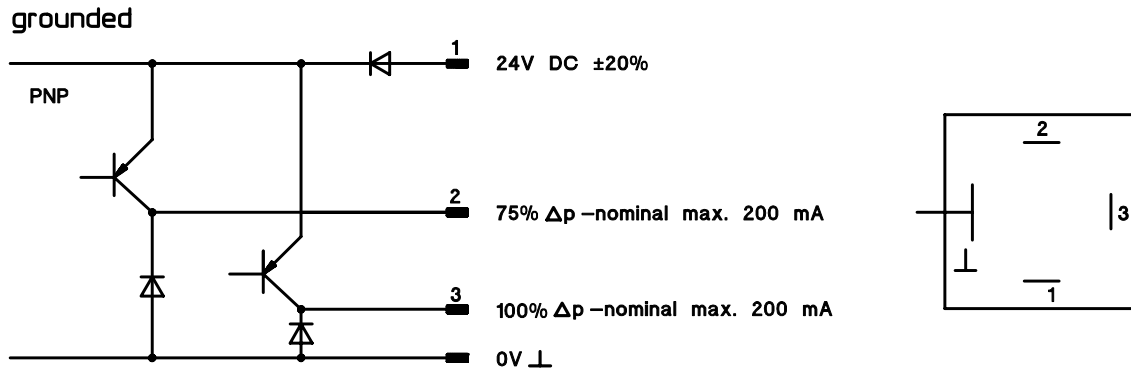
phone 740 - 452 - 7775
fax 740 - 454 - 0075

e-mail sales@atico-internormen.com
url www.internormen.com



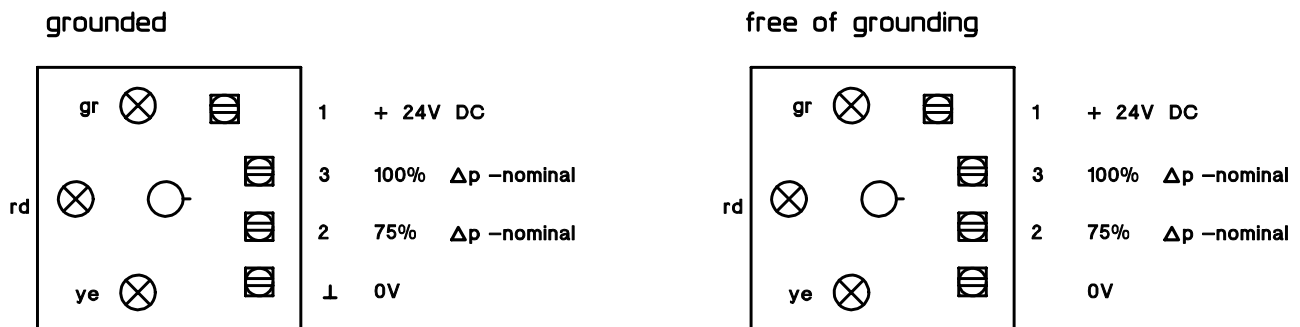
5. Connection configuration:

Connection configuration VS 2



Connection configuration SS 1

The signal plug SS1 is used to indicate the actual switching position at the VS2.



LED - green - on: operating pressure in on-position
 LED - yellow - on: switching contact 75% Δp -nominal switched
 LED - red - on: switching contact 100% Δp -nominal switched