

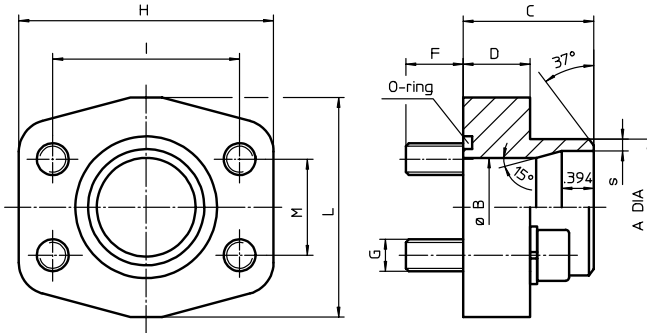
MATING FLANGES

Master Gauge for Holes SAE J518c 3000 PSI

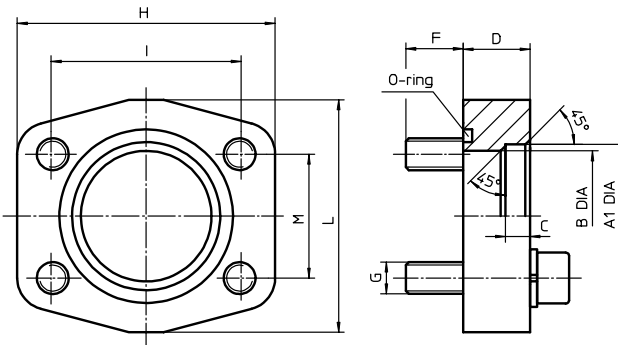
Sheet No.
1652 F

Flanges are offered as complete unit, i. e. including cylinder screws, spring ring and O-ring and are used to connect the filter to the pipe-system.

welded flange socket



welded flange



Type index: (ordering example)

BFS. 8. A. 2.37 x .11. St. P. 3000

1	2	3	4	5	6	7
---	---	---	---	---	---	---

- 1 **series:**
BFS = flange with master gauge for holes according to SAE-J518c
- 2 **connection size:**
 - 6 = 1 1/4"
 - 7 = 1 1/2"
 - 8 = 2"
 - 9 = 2 1/2"
 - A = 3"
 - A1 = 3 1/2"
 - B = 4"
 - C = 5"
- 3 **design:**
 - A = welded flange socket
 - E = welded flange
- 4 **size of connection pipes of the flange:**
outside diameter A of pipe x pipe-wall thickness s (see table below)
- 5 **flange material:**
 - St = steel (C 22, St 52-3)
 - VA = stainless steel (X 5 Cr Ni 1810)
- 6 **sealing material:**
 - P = Nitrile (NBR)
 - V = Viton (FPM)
- 7 **master gauge for holes according to SAE-J518c**
3000 = 3000 PSI

welded flange: design A

SAE-connection 3000 PSI	pipe-dimension A x s	PN ¹⁾ PSI	B	C	D	F	G	H	I	L	M	O-ring acc. to AS 568A/BS 1806	sheet-no.
1 1/4"	1.32 x .10	914	.98	1.61	.82	.70	M 10	3.14	2.31	2.71	1.18	-222	21111-3
	1.66 x .10		1.22										21111-3
1 1/2"	1.90 x .10	914	1.49	1.73	.98	.70	M 12	3.70	2.75	3.03	1.40	-225	21112-3
	2"		1.90 x .15	1.49	1.77	.98	.70	M 12	4.05	3.06	3.50		1.68
2 1/2"	1.90 x .10	914	1.49									-228	21113-3
	2.37 x .11		1.96										21113-3
	2.99 x .11		580	2.48	1.96	.98	.70	M 12	4.52	3.50	3.97		2.00
3"	3.50 x .12	580	2.87	1.96	1.06	.90	M 16	5.31	4.18	4.88	2.44	-237	21115-3
3 1/2"	4.50 x .14	580	3.50	1.88	1.06	.90	M 16	6.02	4.75	5.39	2.75	-241	22746-3
5"	4.50 x .14	580	4.21	1.96	1.06	.98	M16	7.24	6.00	6.50	3.62	-253	-
5"	5.50 x .16	580	5.16	1.96	1.10	.98	M16	7.24	6.00	6.50	3.62	-253	-

welded flange: design E

SAE-connection 3000 PSI	pipe-dimension A x s	PN ¹⁾ PSI	A1	B	C	D	F	G	H	I	L	M	O-ring acc. to AS 568A/BS 1806	sheet-no.
4"	2.99 x .14	580	3.03	2.71	.39	.98	.98	M 16	6.37	5.11	5.74	3.06	-245	21123-3
	3.50 x .12		3.54	3.22										
	4.50 x .14		4.52	3.93										
5"	4.50 x .14	580	4.52	3.93	.47	.98	.74	M16	7.24	6.00	6.50	3.62	-253	32508-3
5"	5.50 x .16	580	5.60	5.12	.47	.98	.74	M16	7.24	6.00	6.50	3.62	-253	32557-3

pipe-dimension A = outside diameter
s = pipe-wall thickness

¹⁾ maximum permissible pressure for pipe connection