

# ADAPTOR, SAE-ANSI Series ASA 3/4" - 5"

Sheet No.  
**1658 D**

## 1. Type index: (ordering example)

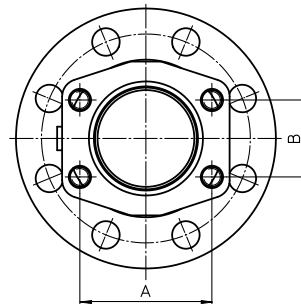
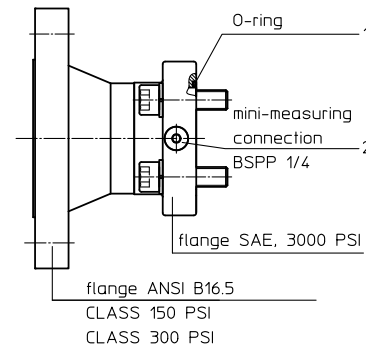
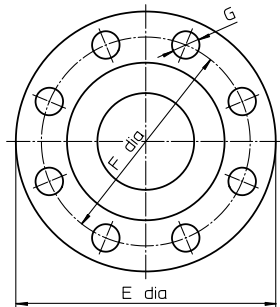
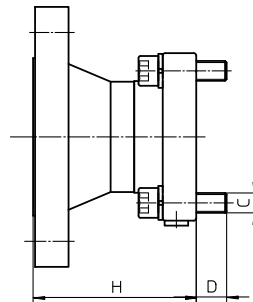
**ASA. FS. A. FA1. A. P. ST**

1	2	3	4	5	6	7
---	---	---	---	---	---	---

- 1 | series:  
ASA = adaptor SAE-ANSI
- 2 | connection 1:  
FS = flange SAE-J518c, 3000 PSI
- 3 | connection size 1:  
4 = 3/4"  
5 = 1"  
8 = 2"  
9 = 2 1/2"  
A = 3"  
B = 4"  
C = 5"
- 4 | connection 2:  
FA11 = ANSI-flange 150 PSI, sealing surface rough grind 1600-3600 µin  
FA12 = ANSI-flange 150 PSI, sealing surface rough grind < 640 µin  
FA1 = ANSI-flange 300 PSI, sealing surface rough grind 1600-3600 µin  
FA2 = ANSI-flange 300 PSI, sealing surface rough grind < 640 µin
- 5 | connection size 2:  
4 = 3/4"  
5 = 1"  
7 = 1 1/2"  
8 = 2"  
9 = 2 1/2"  
A = 3"  
B = 4"  
C = 5"
- 6 | sealing material:  
P = Nitrile (NBR)  
V = Viton (FPM)
- 7 | flange material:  
ST = steel  
VA = stainless steel

## 2. Spare parts:

item	qty.	designation	dimension	article-no.	
1	1	O-ring	24,99 x 3,53	304381 (NBR)	305784 (FPM)
	1	O-ring	32,90 x 3,53	318850 (NBR)	338231 (FPM)
	1	O-ring	56,75 x 3,53	306035 (NBR)	310264 (FPM)
	1	O-ring	69,45 x 3,53	305868 (NBR)	307357 (FPM)
	1	O-ring	85,32 x 3,53	305590 (NBR)	306308 (FPM)
	1	O-ring	110,72 x 3,53	316355 (NBR)	316356 (FPM)
	1	O-ring	136,12 x 3,53	320162 (NBR)	320163 (FPM)
2	1	screw plug (at 2" - 5")	BSPP 1/4	305003 (ST)	306968 (VA)



## Dimensions: inch

connection	nominal pressure	A	B	C	D	O-ring according to AS 568A/BS 1806	E	F	G	H
CLASS 150 PSI	3/4"	1,87	0,87	M10	0,63	-214 (24,99 x 3,53)	3,88	2,75	0,62	3,54
	1"	2,06	1,03	M10	0,63	-219 (32,90 x 3,53)	4,25	3,12	0,62	3,74
	1 1/2" <sup>1)</sup>	3,06	1,69	M12	0,71	-228 (56,75 x 3,53)	5,00	3,88	0,62	4,30
	2"	3,06	1,69	M12	0,71	-228 (56,75 x 3,53)	6,00	4,75	0,75	4,33
	2 1/2"	3,50	2,00	M12	0,71	-232 (69,45 x 3,53)	7,00	5,50	0,75	4,80
	3"	4,19	2,44	M16	0,98	-237 (85,32 x 3,53)	7,50	6,00	0,75	4,80
	4"	5,12	3,06	M16	0,98	-245 (110,72 x 3,53)	9,00	7,50	0,75	5,04
CLASS 300 PSI	5"	6,00	3,62	M16	0,98	-253 (136,12 x 3,53)	10,00	8,50	0,88	5,55
	3/4"	1,87	0,87	M10	0,63	-214 (24,99 x 3,53)	4,62	2,06	0,75	3,74
	1"	2,06	1,03	M10	0,63	-219 (32,90 x 3,53)	4,88	3,50	0,75	4,02
	1 1/2" <sup>1)</sup>	3,06	1,69	M12	0,71	-228 (56,75 x 3,53)	6,12	4,50	0,88	4,53
	2"	3,06	1,69	M12	0,71	-228 (56,75 x 3,53)	6,50	5,00	0,75	4,61
	2 1/2"	3,50	2,00	M12	0,71	-232 (69,45 x 3,53)	7,50	5,88	0,88	5,04
	3"	4,19	2,44	M16	0,98	-237 (85,32 x 3,53)	8,25	6,62	0,88	5,20
4"	5,12	3,06	M16	0,98	-245 (110,72 x 3,53)	10,00	7,88	0,88	5,43	
5"	6,00	3,62	M16	0,98	-253 (136,12 x 3,53)	11,00	9,25	0,88	5,94	

<sup>1)</sup> by counter flange SAE 2" to 1 1/2" 3000 PSI

Changes of measures and design are subject to alteration!