

1) connection for the potential equalisation, only for application in the explosive area

1. Type index:

1.1. Complete filter: (ordering example)

GFK. 50. I. ST. 0,50G. P. FD1. 8. OE

1	2	3	4	5	6	7	8	9
---	---	---	---	---	---	---	---	---

- 1 **series:**
GFK = coarse filter with strainer basket
- 2 **nominal size:** 50, 65, 80
- 3 **execution:**
I = filter outlet according to I
II = filter outlet according to II
- 4 **housing material:**
ST = housing of steel
VA = housing of stainless steel
- 5 **filter-material and filter-fineness:**
0,25 G = 0,25 mm, 0,50 G = 0,50 mm, 0,75 G = 0,75 mm,
1,00 G = 1,00 mm, 1,50 G = 1,50 mm stainless steel wire mesh
- 6 **sealing material:**
P = Nitrile (NBR)
V = Viton (FPM)
- 7 **connection:**
FD1 = flange DIN 2633, form C DIN 2526
FD2 = flange DIN 2633, form E DIN 2526
- 8 **connection size:**
8 = DN 50 (GFK50)
9 = DN 65 (GFK65)
A = DN 80 (GFK80)
- 9 **clogging indicator:**
- = without
OE = clogging indicator, visual-electrical, see sheet-no. 1614
DM = pressure difference gauge
DKM = pressure difference gauge with contact

1.2. Strainer basket: (ordering example)

Gr.00. 0,50. ST

1	2	3
---	---	---

- 1 **size of strainer basket :** Gr. 00, Gr. 01
- 2 **filter-material and filter-fineness:**
0,25 G = 0,25 mm, 0,50 G = 0,50 mm, 0,75 G = 0,75 mm,
1,00 G = 1,00 mm, 1,50 G = 1,50 mm stainless steel wire mesh
- 3 **material of strainer basket:**
ST = strainer basket of steel, wire mesh of stainless steel
VA = strainer basket and wire mesh of stainless steel

2. Dimensions:

type	GFK 50	GFK 65	GFK 80
connection	DN 50	DN 65	DN 80
size of strainer basket	Gr. 00	Gr. 01	Gr. 01
Q = m ³ /h	25	35	55
filter surface m ²	0,12	0,18	0,18
A	442	587	587
B	215	340	340
C	85	100	100
D	300	420	420
weight kg	40	44	45
volume tank	10 l	14 l	14 l

3. Spare parts:

item	qty.	designation	dimension and article-no.		
			GFK 50	GFK 65	GFK 80
1	1	strainer basket	Gr. 00	Gr. 01	Gr. 01
2	1	O-ring	190 x 5 305432 (NBR) 310283 (FPM)		
3	2	screw plug	G ½ 309730		
4	2	gasket	A 22 x 27 305564		
5	2	screw plug	G ¼ 309734		
6	2	gasket	A 14 x 18 306330		
7	1	spring	Da = 95 304414		
8	1	clogging indicator	OE, DM or DKM		

4. Description:

Coarse filters of the series GFK 50-80 are suitable for a working pressure up to 16 bar. Pressure peaks can be absorbed with a sufficient margin of safety. The filters can be installed as suction filter, pressure filter or return-line filter.

The filter elements are filter baskets with steel wire mesh as filter material. The perforated centre tube is laid out with steel wire mesh. The flow direction is from inside to the outside.

INTERNORMEN-Filter elements are known as elements with a high intrinsic stability and an excellent filtration capability, a high dirt-retaining capacity and a long service life.

INTERNORMEN-Filter are suitable for all petroleum based fluids, HW-emulsions, most synthetic hydraulic fluids and lubrication oils.

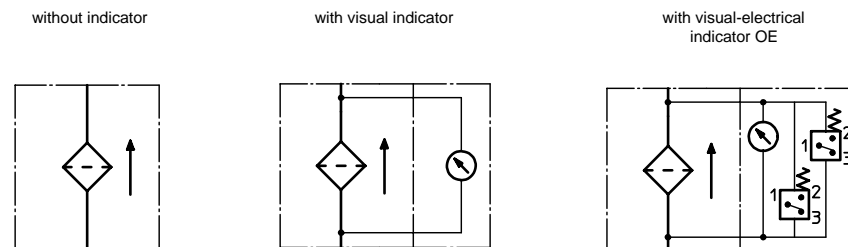
Approvals according to TÜV, and the major „Shipyards Classification Societies“ D.N.V.; B.V.; G.L.; L.R.S.; R.I.N.A.; A.B.S.; P.R.S.;USS.R.S. and others are possible.

5. Technical data:

temperature range:	- 10 °C to + 80 °C (for a short time + 100 °C)
operating medium:	mineral oil, other media on request
max. operating pressure:	16 bar
test pressure:	23 bar
connection system:	SAE-flange 3000 PSI
housing material:	C-steel or stainless steel
sealing material:	Nitrile (NBR) or Viton (FPM), other materials on request
installation position:	vertical

Classified under the Pressure Equipment Directive 97/23/EC for mineral oil (fluid group 2), Article 3, Para. 3.
Classified under ATEX Directive 94/9/EC according to specific application (see questionnaire sheet-no. 34279-4).

6. Symbols:



7. Pressure drop flow curves:

Precise flow rates see 'INT-Expert-System Filter', respectively Δp -curves; depending on filter fineness and viscosity.