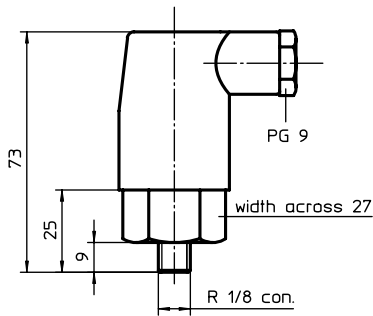


# CLOGGING INDICATOR

## Series E (electrical), O (visual)

Sheet No.  
**1616 J**



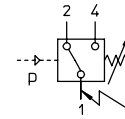
### 1. Type index: (ordering example)

E2.0,3.P = pressure switch, contact maker and contact breaker, switching pressure 0,3 bar  
 E2.1,5.P = pressure switch, contact maker and contact breaker, switching pressure 1,5 bar  
 E2.2,5.P = pressure switch, contact maker and contact breaker, switching pressure 2,5 bar

### 2. Technical data:

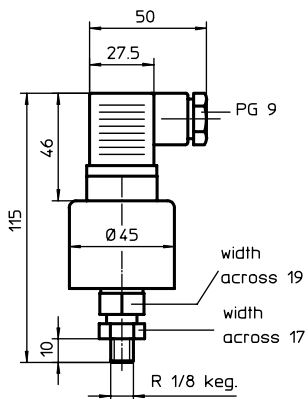
max. pressure to 100 bar  
 temperature range: -20°C to +80°C  
 max. contact load: max.250 V ≅ /2A  
 sealing material: nitrile (NBR)  
 protection: IP 55

### 3. Symbol:



1 + 2 contact breaker  
 1 + 4 contact maker

The functions contact making, contact breaking or contact making and breaking refer to the increasing pressure.



### 1. Type index: (ordering example)

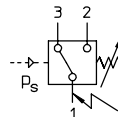
E4.-0,25.P = pressure switch, contact maker and contact breaker, switching pressure -0,25 bar

### 2. Technical data:

max. pressure to 80 bar  
 temperature range: -20°C to +80°C  
 max. contact load: max.250 V ≅ /5A  
 sealing material: nitrile (NBR)  
 protection: IP 65

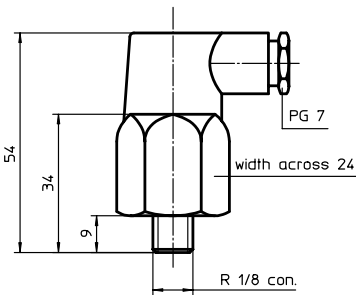
For the electrical connection please use only enclosed utensil socket. Other utensil sockets have a longer fixing screw which can destroy the inside micro switch.  
 The screw of an available utensil socket should have a max. thread reach of 28 mm. Do not forget the shaped packing by sticking up the utensil and tighten the fixing screw moderately.

### 3. Symbol:



1 + 2 contact maker  
 1 + 3 contact breaker

The functions contact making, contact breaking or contact making and breaking refer to the increasing pressure (0 bar → -0,25 bar).



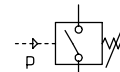
### 1. Type index: (ordering example)

E1.1,5.P = pressure switch, contact maker, switching pressure 1,5 bar  
 E1.2,5.P = pressure switch, contact maker, switching pressure 2,5 bar  
 E5.1,5.P = pressure switch, contact breaker, switching pressure 1,5 bar  
 E5.2,5.P = pressure switch, contact breaker, switching pressure 2,5 bar  
 E5.5,0.P = pressure switch, contact breaker, switching pressure 5,0 bar

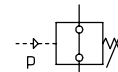
### 2. Technical data:

max. pressure to 300 bar  
 temperature range: -20°C to +100°C  
 max. contact load: max.250 V ≅ /2A  
 sealing material: nitrile (NBR)  
 protection: IP 55

### 3. Symbol:

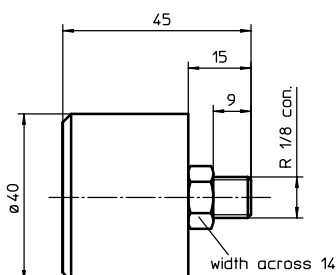


1 + 2 contact maker



1 + 2 contact breaker

The function contact making or contact breaking refer to the increasing pressure.



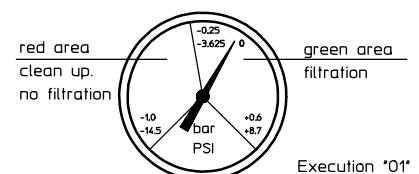
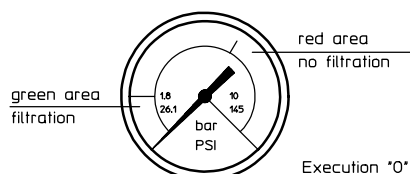
### 1. Type index: (ordering example)

O = clogging indicator visual, 0 to 10 bar  
 O1 = clogging indicator visual, + 0,6 bar to -1,0 bar

### 2. Technical data:

temperature range: -20°C to +80°C

### 3. Symbol:



Execution \*0\*

Execution \*01\*

EDV 03/10

Changes of measures and design are subject to alteration!