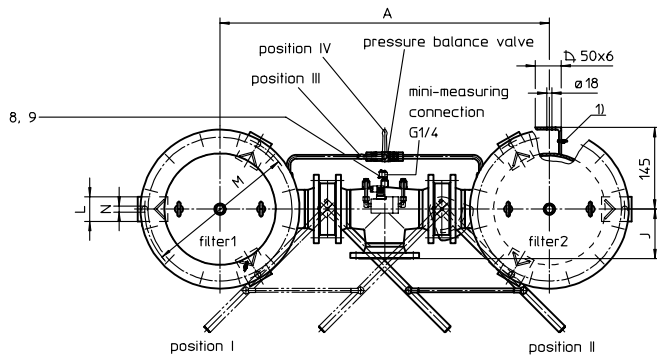
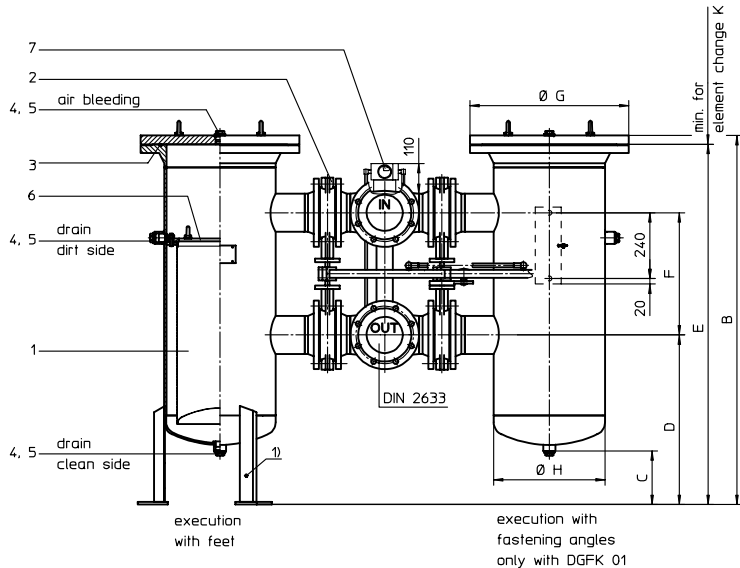


**DUPLEX COARSE FILTER, change-over**  
**Series DGFK 01-07 DN 50-300 PN 16**

Sheet No.  
**3109 E**



Pos. I: filter 1 in operation  
 Pos II: filter 2 in operation

with pressure balance valve:  
 Pos III: valve open  
 Pos IV: valve closed

Connection standard as in drawing.  
 On request: inlet - on top or backside  
 outlet - bottom or backside

Please specify on order!

1) connection for the potential equalisation,  
 only for application in the explosive area

**2. Dimensions:**

type	connection DN	Q = m³/h	A	B	C	D	E	F	G	H	J	K	L	M	N	weight kg	volume tank								
DGFK 01	50	25	796	740	120	305	720	330	280	194	111	420	70	300	18	150	2x 14,0 l								
	65	35	822			273		347									123		2x 14,5 l						
	80	55	862	805		285	785	400									138		2x 16,0 l						
DGFK 02	50	25	876	1020	170	515		330	405	273	111	550	70	380	18	170	2x 41,0 l								
	65	35	902				498	995			347							123		2x 42,0 l					
	80	55	942				445				400							138							
	100	90	984			1045	424	1020			421							159							
DGFK 04	125	110	1032	1555	170	399		446	405	273	181	1050	70	380	18	220	2x 70,0 l								
	80	55	942				938				400							138							
	100	90	984				917	1530			421							159							
	125	110	1032				892				446							181							
DGFK 06	150	192	1082	1350	180	846		492	580	406	200	720	90	550	22	400	2x 127,0 l								
	125	110	1202				619	1315			446							181							
	150	192	1232				573				492							200		720	90	550	22	400	2x 130,0 l
	200	288	1350			1370	542	1335			543							242							2x 138,0 l
DGFK 07	250	440	1460	1450	167	517	1415	618	715	508	288	1050	90	650	22	965	2x 289,0 l								
	300	630	1760	1805		664	1775	811									334								

**1. Type index:**

**1.1. Complete filter:** (ordering example)

**DGFK. 04. ST. 0,50G. P. FD1. B. -. OE**

1	2	3	4	5	6	7	8	9
---	---	---	---	---	---	---	---	---

- 1 **series:**  
 DGFK = duplex coarse filter with strainer basket
- 2 **nominal size:** 01, 02, 04, 06, 07
- 3 **housing material:**  
 ST = of steel  
 VA = of stainless steel
- 4 **filter-material and filter-fineness:**  
 0,25 G = 0,25 mm, 0,50 G = 0,50 mm, 0,75 G = 0,75 mm,  
 1,00 G = 1,00 mm, 1,50 G = 1,50 mm stainless steel wire mesh
- 5 **sealing material:**  
 P = Nitrile (NBR)  
 V = Viton (FPM)
- 6 **connection:**  
 FD1 = flange EN 1092-1, design B1  
 FD2 = flange EN 1092-1, design B2
- 7 **connection size:**

DN	filter nominal-size					
8 = 50	01	02				
9 = 65	01	02				
A = 80	01	02	04			
B = 100		02	04			
C = 125		02	04	06		
D = 150			04	06		
E = 200				06		
F = 250				06		
G = 300						07

- 8 **manner of fastening:**  
 - = execution with feet  
 B = fastening angle (only with DGFK 01)
- 9 **clogging indicator :**  
 - = without clogging indicator  
 OE = clogging indicator, visual-electrical see sheet-no. 1614  
 DM = differential pressure gauge  
 DKM = differential pressure gauge with contact

**1.2. Strainer basket:** (ordering example)

**Gr04. 0.50G. VA**

1	2	3
---	---	---

- 1 **size of strainer basket:** Gr 01, Gr 02, Gr 04, Gr 06, Gr 07
- 2 **filter-material and filter-fineness:**  
 0,25 G = 0,25 mm, 0,50 G = 0,50 mm, 0,75 G = 0,75 mm,  
 1,00 G = 1,00 mm, 1,50 G = 1,50 mm stainless steel wire mesh
- 3 **strainer basket material:**  
 VA = stainless steel

Changes of measures and design are subject to alteration!



Friedensstrasse 41, 68804 Altlusheim, Germany

phone +49 - (0)6205 - 2094-0 e-mail sales@internormen.com  
 fax +49 - (0)6205 - 2094-40 url www.internormen.com



### 3. Spare parts:

item	qty.	designation	dimension and article-no.				
			DGFK 01	DGFK 02	DGFK 04	DGFK 06	DGFK 07
1	2	strainer basket	Gr 01	Gr 02	Gr 04	Gr 06	Gr 07
2	4	stop flap <sup>1)</sup>	DN 50-80	DN 50-125	DN80-150	DN 125-250	DN 300
3	2	O-ring	190 x 5 305432 (NBR) 310283 (FPM)	275 x 5 307414 (NBR) 310288 (FPM)		429 x 6 308659 (NBR) 310273 (FPM)	516 x 6 301962 (NBR) 311474 (FPM)
4	6	screw plug	G ½ 309730			G 1 309732	
5	6	gasket	A 22 x 27 305564			A 33 x 39 308257	
6	2	spring	Da = 95 304414			pressure plate	
7	1	clogging indicator		OE, DM or DKM			
8	2	screw plug				G ¼ 309734	
9	2	gasket				A 14 x 18 306330	

<sup>1)</sup> dimension of stop flap = connection size

### 4. Description:

Duplex filters of the series DGFK 01-07 are suitable for a working pressure up to 16 bar. Pressure peaks can be absorbed with a sufficient margin of safety. Four mechanically connected change-over flaps enabling the change-over without service-interruption from the clean to the dirty filter-side. The filters can be installed as suction filter, pressure filter or return-line filter. The filter elements are filter baskets with steel wire mesh as filter material. The perforated centre tube is layed out with steel wire mesh. The flow direction is from outside to the inside. INTERNORMEN-Filter elements are known as elements with a high intrinsic stability and an excellent filtration capability, a high dirt-retaining capacity and a long service life. INTERNORMEN-Filter are suitable for all petroleum based fluids, HW-emulsions, most synthetic hydraulic fluids and lubrication oils. Approvals according to TÜV, and the major „Shipyards Classification Societies“ D.N.V.; B.V.; G.L.; L.R.S.; R.I.N.A.; A.B.S.; P.R.S.;USS.R.S. and others are possible.

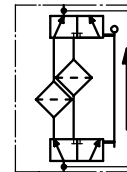
### 5. Technical data:

temperature range: - 10°C to + 80°C (for a short time + 100°C)  
operating medium: mineral oil, other media on request  
max. operating pressure: 16 bar  
test pressure: 23 bar  
connection system: flange EN 1092-1, PN16  
housing material: C-steel or stainless steel  
sealing material: Nitrile (NBR) or Viton (FPM), other materials on request  
installation position: vertical  
mini-measuring connection: G ¼

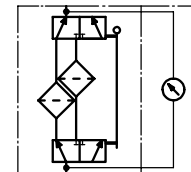
Classified under the Pressure Equipment Directive 97/23/EC for mineral oil (fluid group 2), Article 3, Para. 3.  
Classified under ATEX Directive 94/9/EC according to specific application (see questionnaire sheet-no. 34279-4).

### 6. Symbols:

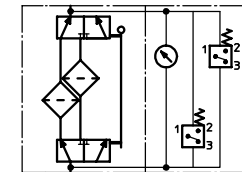
without indicator



with visual indicator



with visual-electrical indicator OE



### 7. Pressure drop flow curves:

Precise flow rates see 'INT-Expert-System Filter', respectively Δp-curves; depending on filter fineness and viscosity.